



TABLE OF CONTENTS

ARRIVAL

AIRFRAME

- PAINT STRIP AND INSPECTION
- STRUCTURAL REPAIRS
- ELECTRICAL
- MODIFICATIONS (NEW BATTERIES)
- FABRIC COVERING—AILERONS
- REPAIRS TO ELEVATORS AND RUDDER
- NACELLES

FLIGHT DECK

- BEFORE AND AFTER OF INSTRUMENT PANEL
- UPGRADES DONE
- CLOSEUPS OF PLACARDS, ETC (REFERENCE PAINT SPEC FOR THE COWL FLAP SELECTOR)
- NEW SEATS/BLANKETS/ETC.

MAIN CABIN INTERIOR

- SEATS
- HAMMOCKS
- CARGO NET
- SIGNATURES

ENGINES

- WORK PERFORMED

PROPELLERS

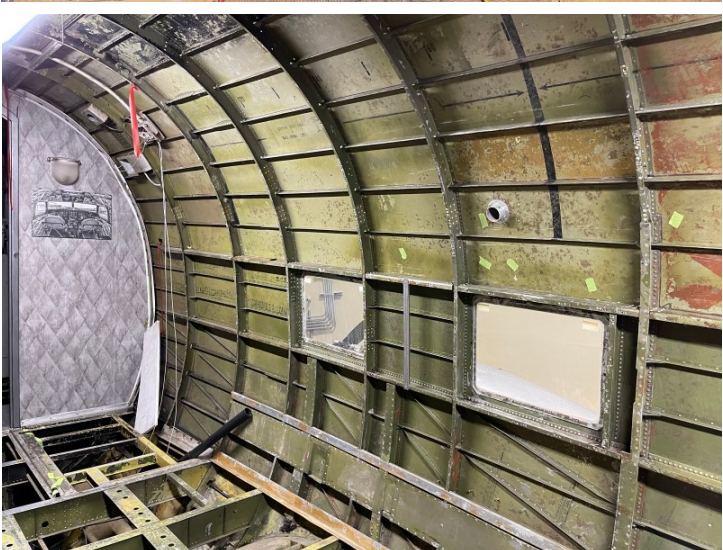
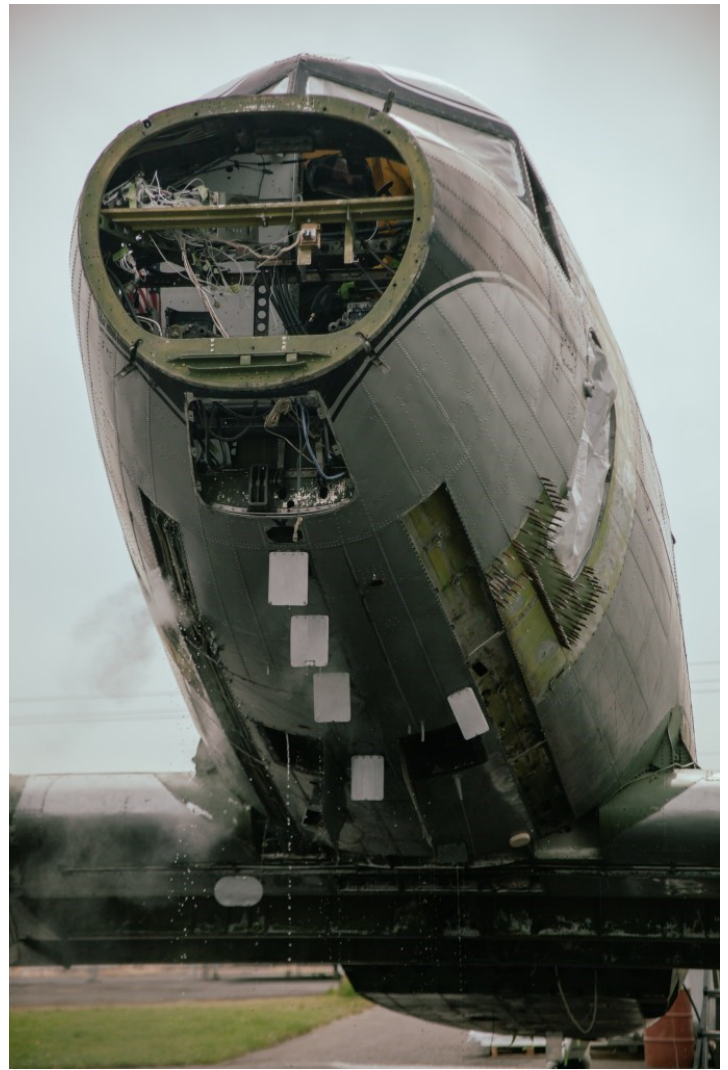
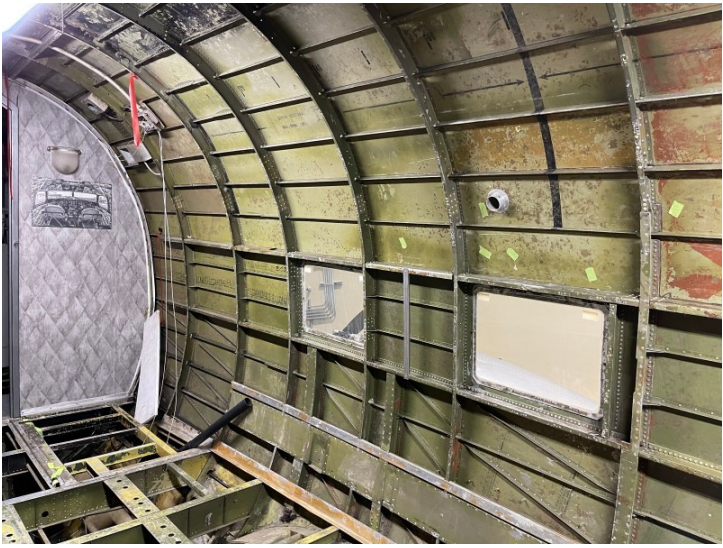
- OVERHAULED
- PAINT SPECS

LIVERY

- YACHT CLUB DECAL (MAYBE A BIT OF HISTORY)
- STAMPING THE STENCILS







Airframe and General Structural Work

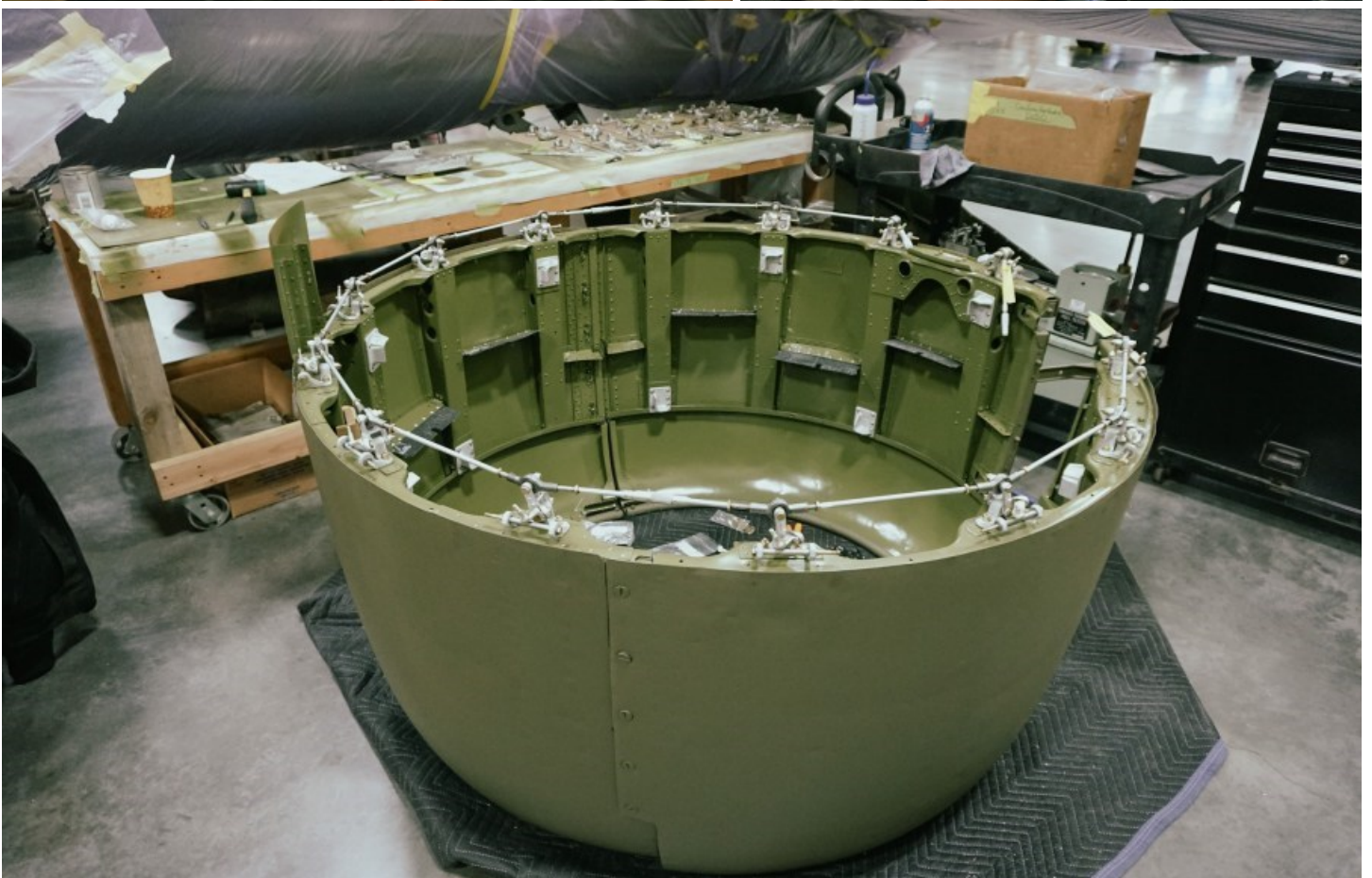
Upon its arrival in Aurora, the aircraft underwent immediate disassembly for comprehensive maintenance and upgrades. This process included thorough paint stripping to facilitate structural inspection and compliance with Airworthiness Directives (AD). Engines were carefully removed and inspected, while propellers were sent out for overhaul and compliance with AD requirements. Notably, during the disassembly and inspection phase, original crew member signatures were discovered under the old interior, which will be preserved and displayed as a testament to the aircraft's history.



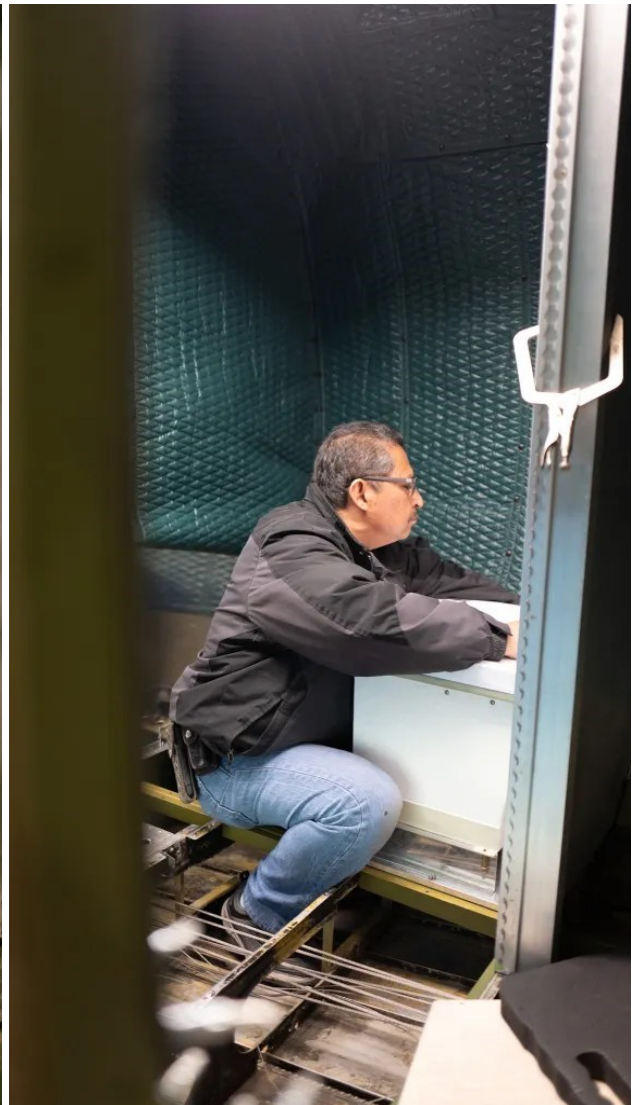
Airframe and General Structural Work

Significant repairs were undertaken across the airframe, addressing issues such as a center section repair necessitated by a previous heavy landing. Both left-wing spars underwent essential repairs, alongside numerous smaller structural fixes throughout the aircraft. The landing gear was completely rebuilt, transitioning from a bungee system to a hydraulic system for enhanced reliability and performance. Other notable improvements included the reskinning of the hamburger door and the installation of new fabric on the rudder and ailerons, as well as repairs to the elevators.

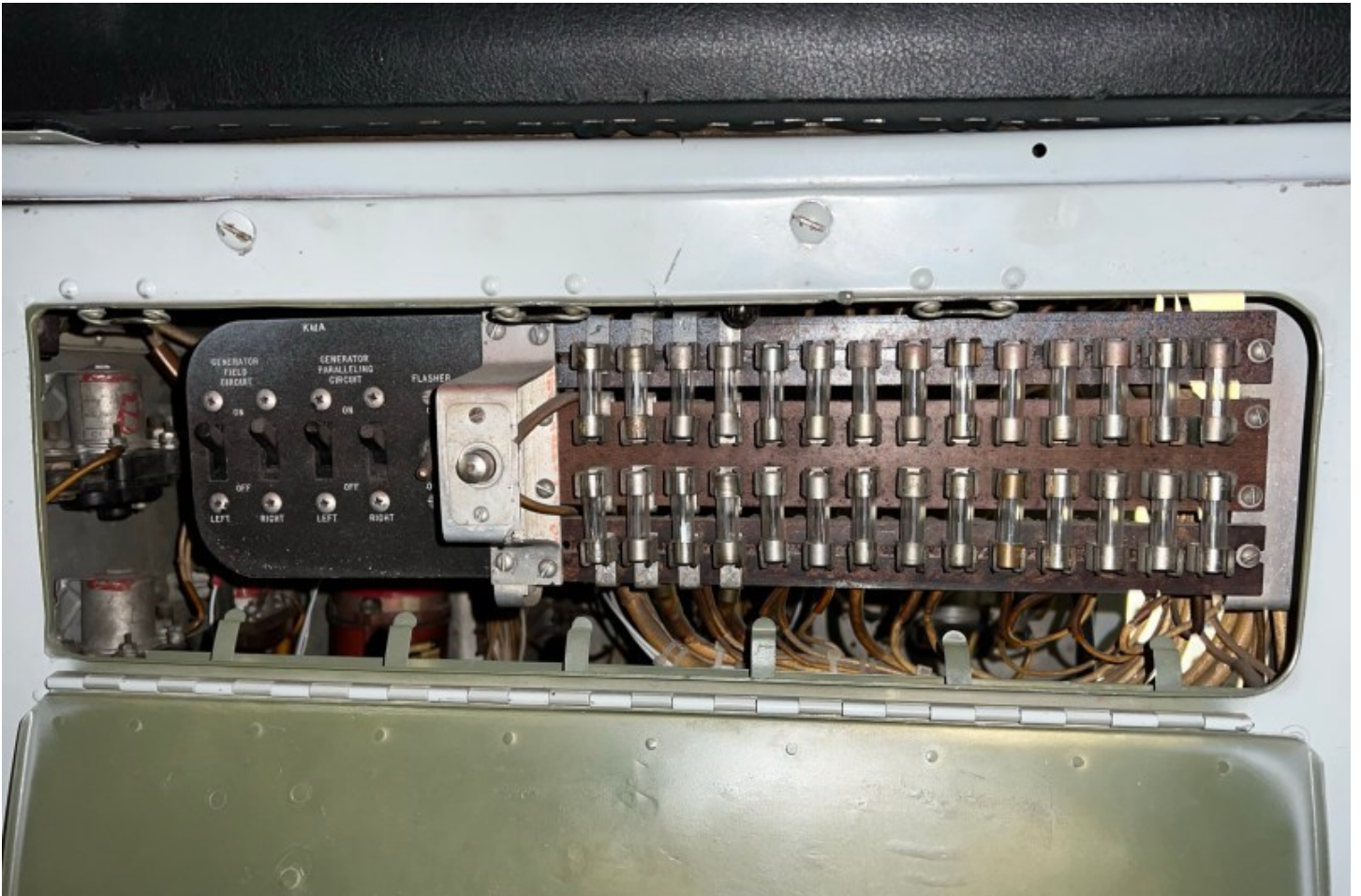
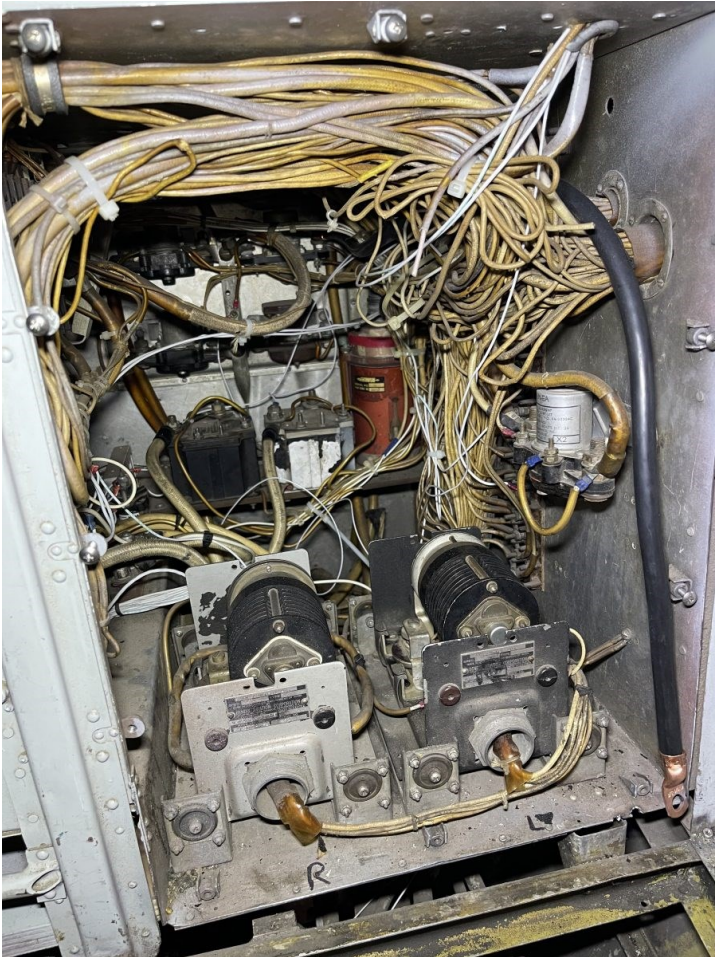








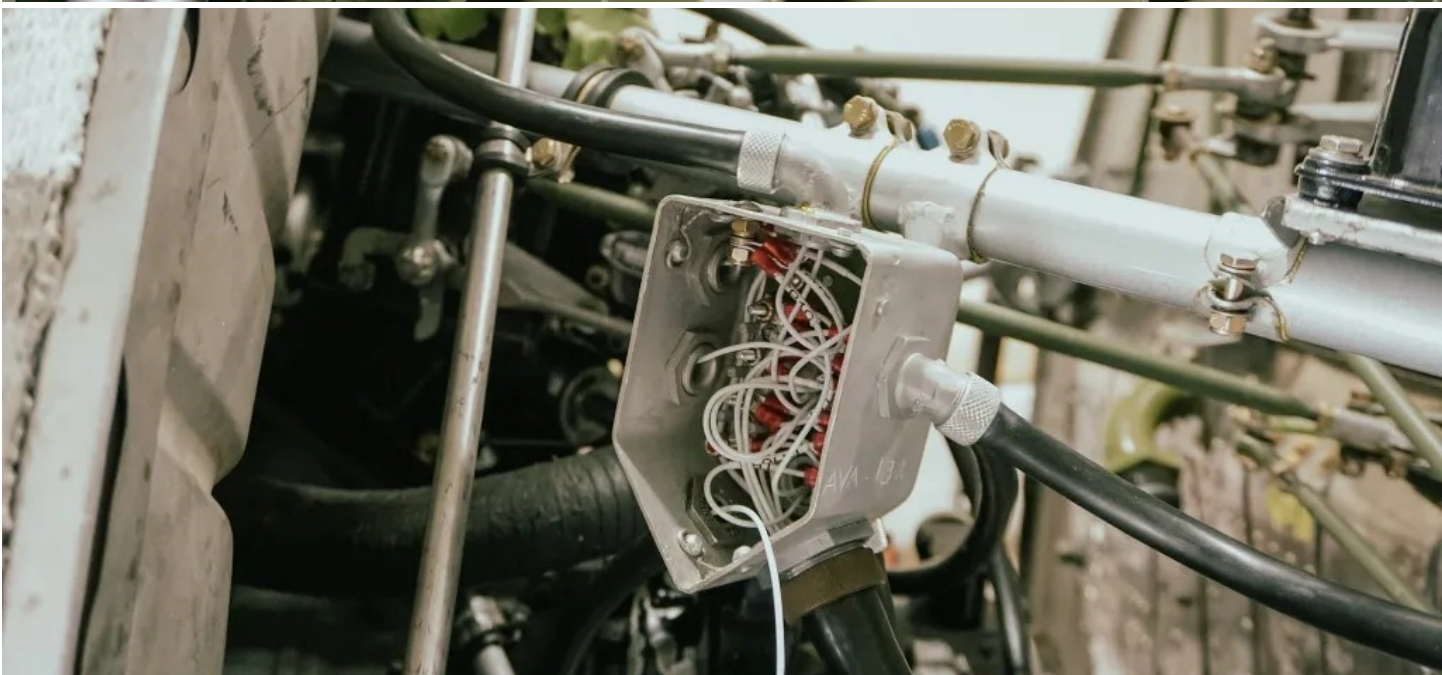
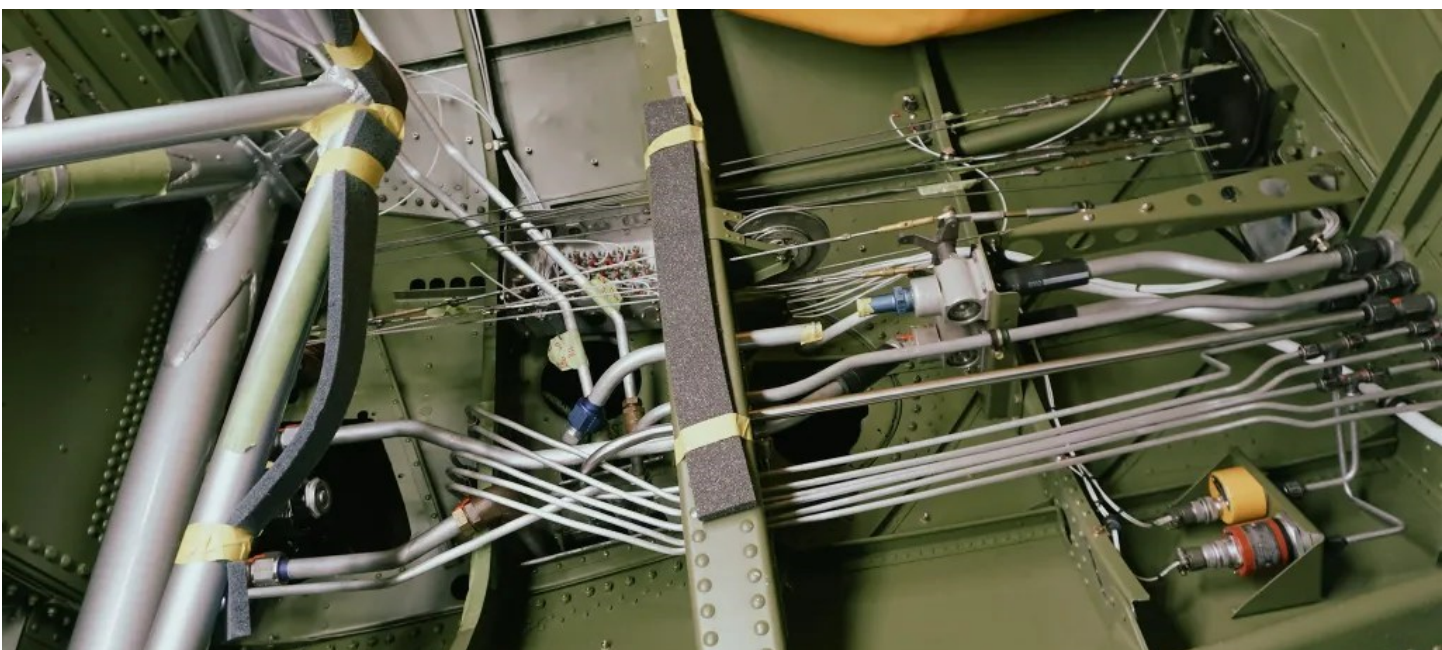






Electrical System

The restoration project commenced with the meticulous removal of the old electrical system, adhering strictly to the guidelines outlined in the Douglas manual. A new electrical cabinet was custom-built to modern standards, ensuring enhanced reliability and functionality. Electric and fluid line trunk panels were meticulously cleaned and repainted, maintaining the aircraft's integrity while meeting stringent safety standards. Additionally, extensive rewiring was conducted in the wheel wells, complemented by the installation of chip detectors, further bolstering operational safety.





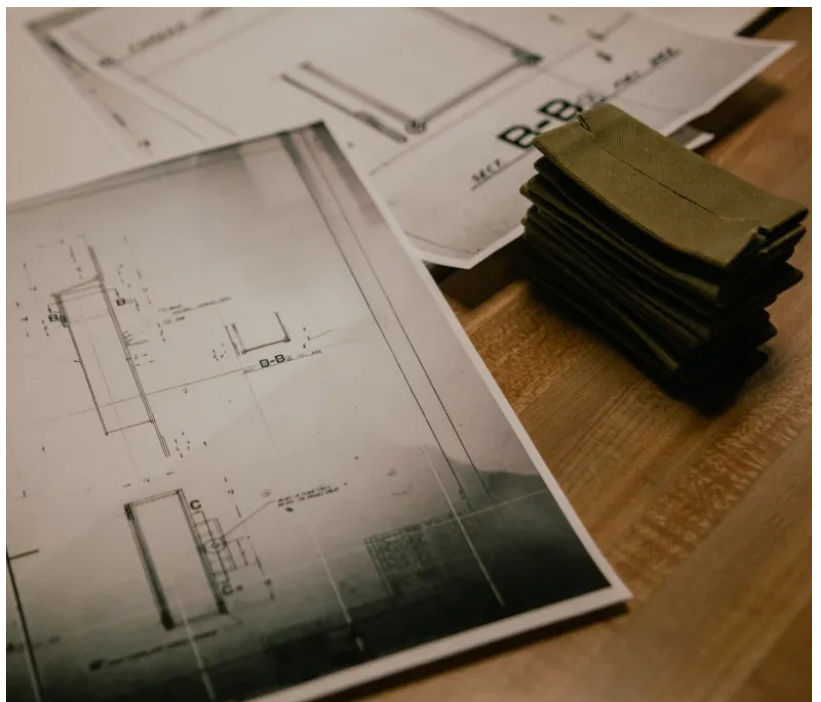


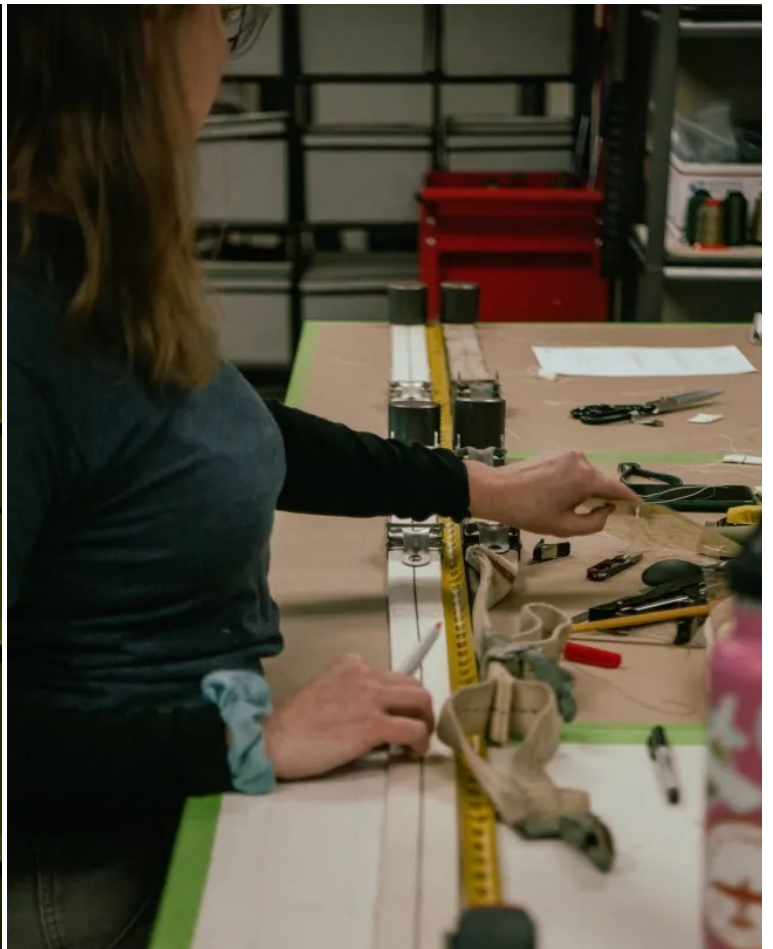
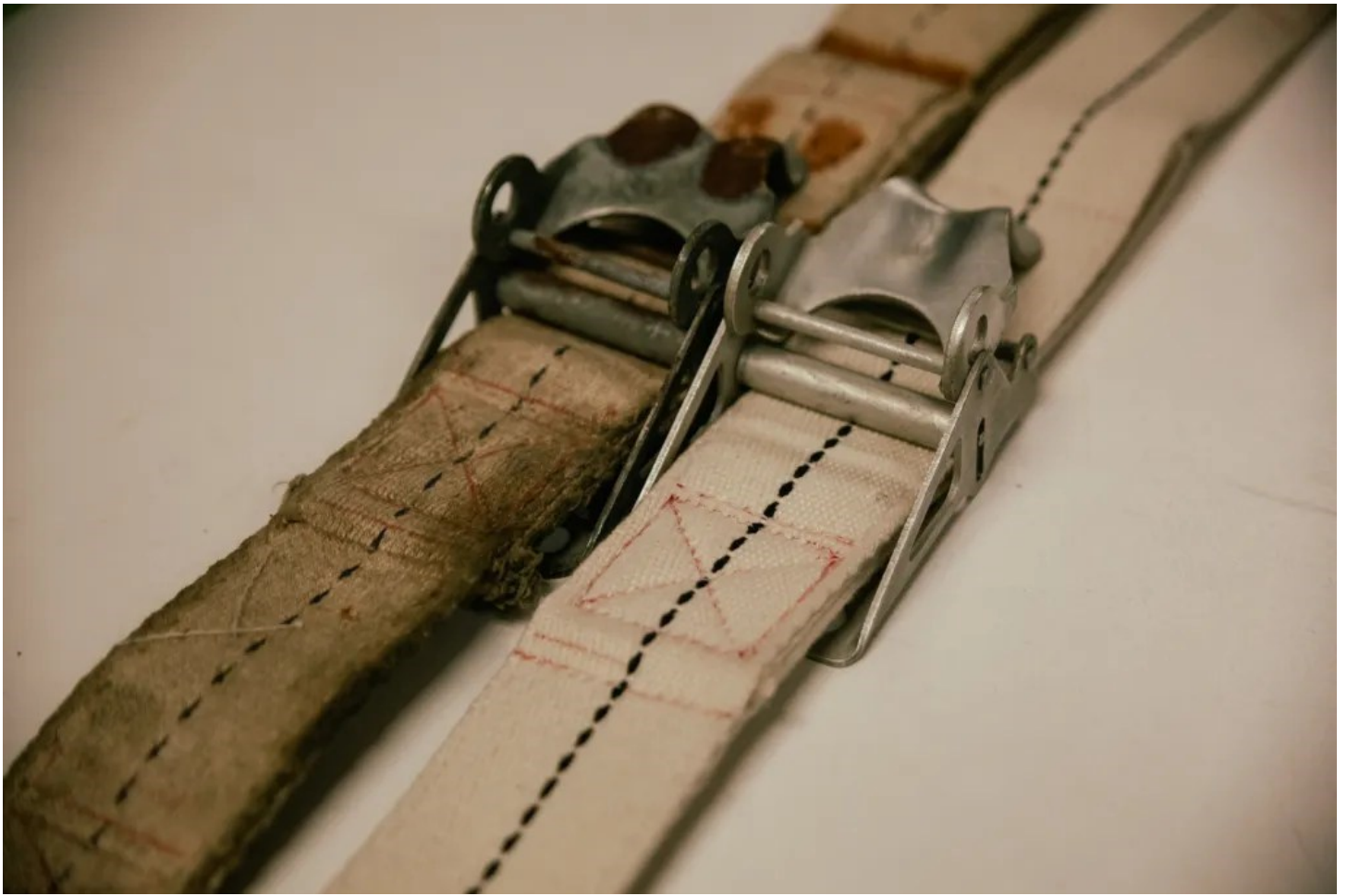


Interior Restoration

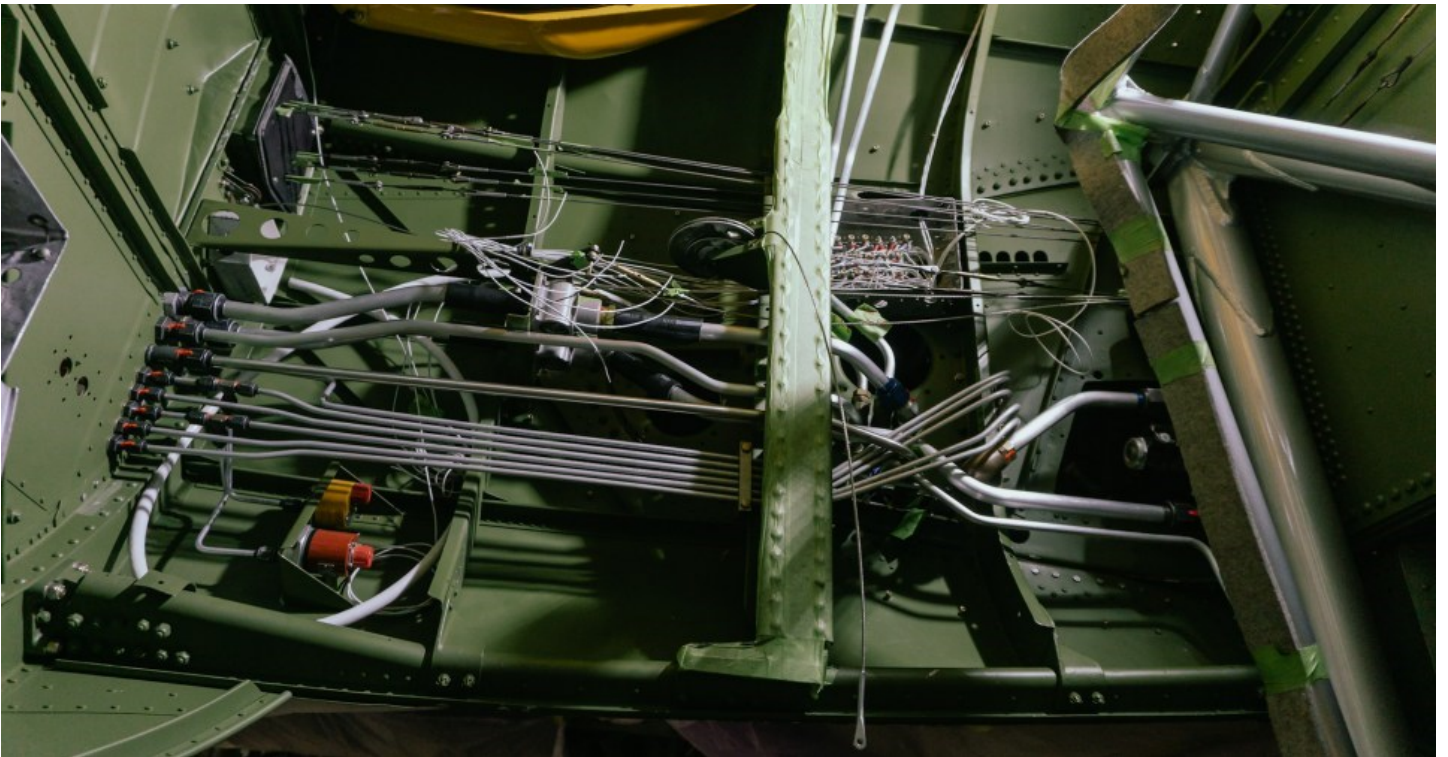
The interior restoration focused on preserving historical accuracy while enhancing comfort and functionality. Original interior load section markings were meticulously replicated using stencils and sponge stamping, maintaining the aircraft's authenticity. The control quadrant was assembled and installed, awaiting the precise installation of control cables. Unique additions included the reproduction of an original Litter Strap assembly and retrofitting a three-place paratroop seat for installation in the main cabin. Upholstery work progressed with meticulous attention to detail, ensuring that passenger seat cushions and interior furnishings were crafted according to the original Douglas blueprints, combining historical authenticity with modern comfort.

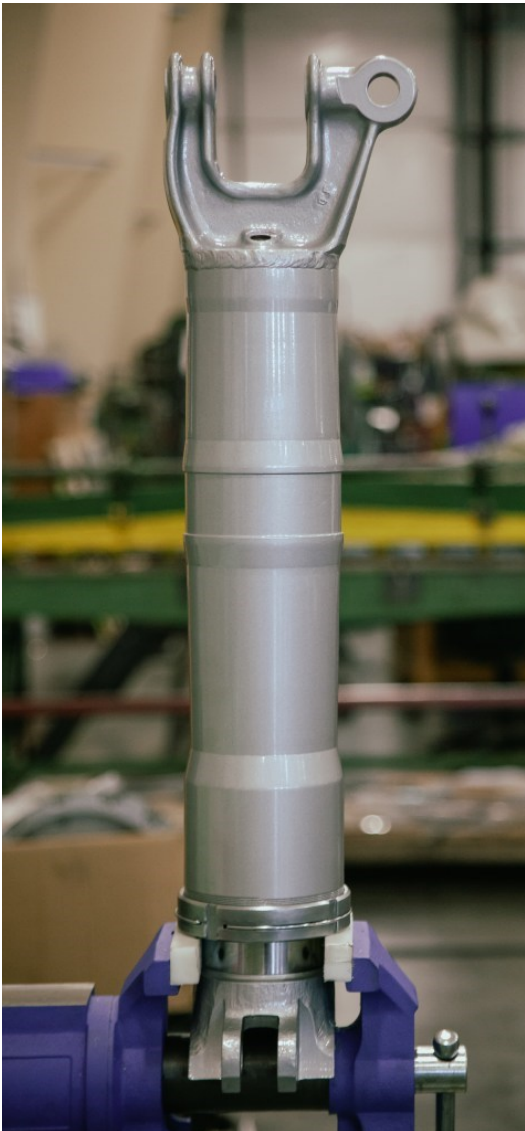


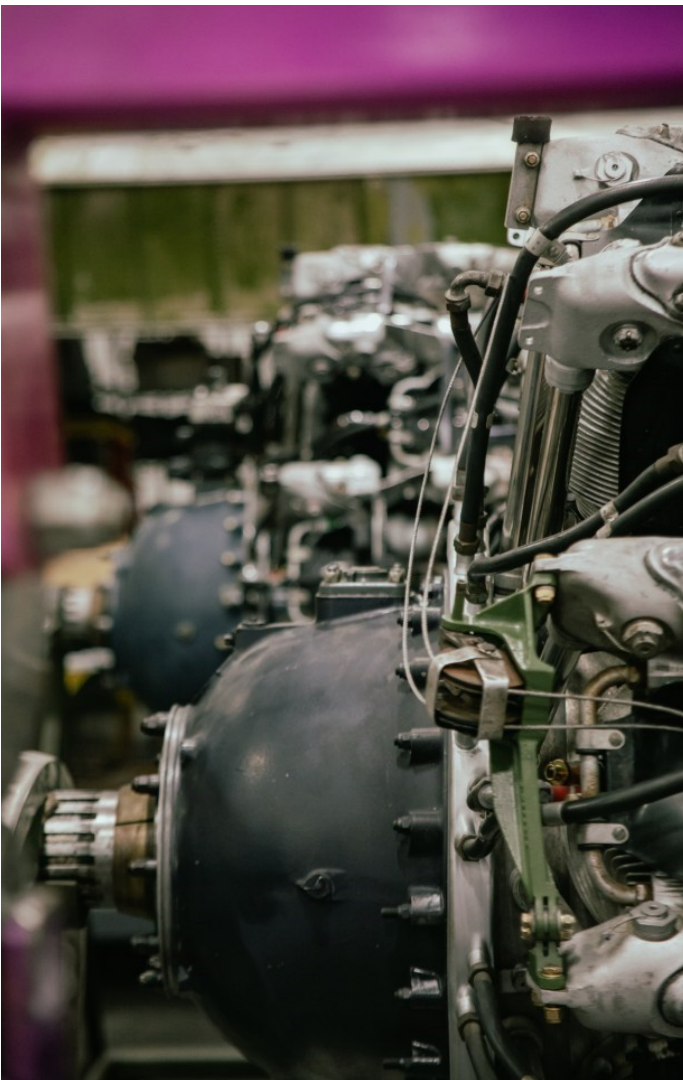
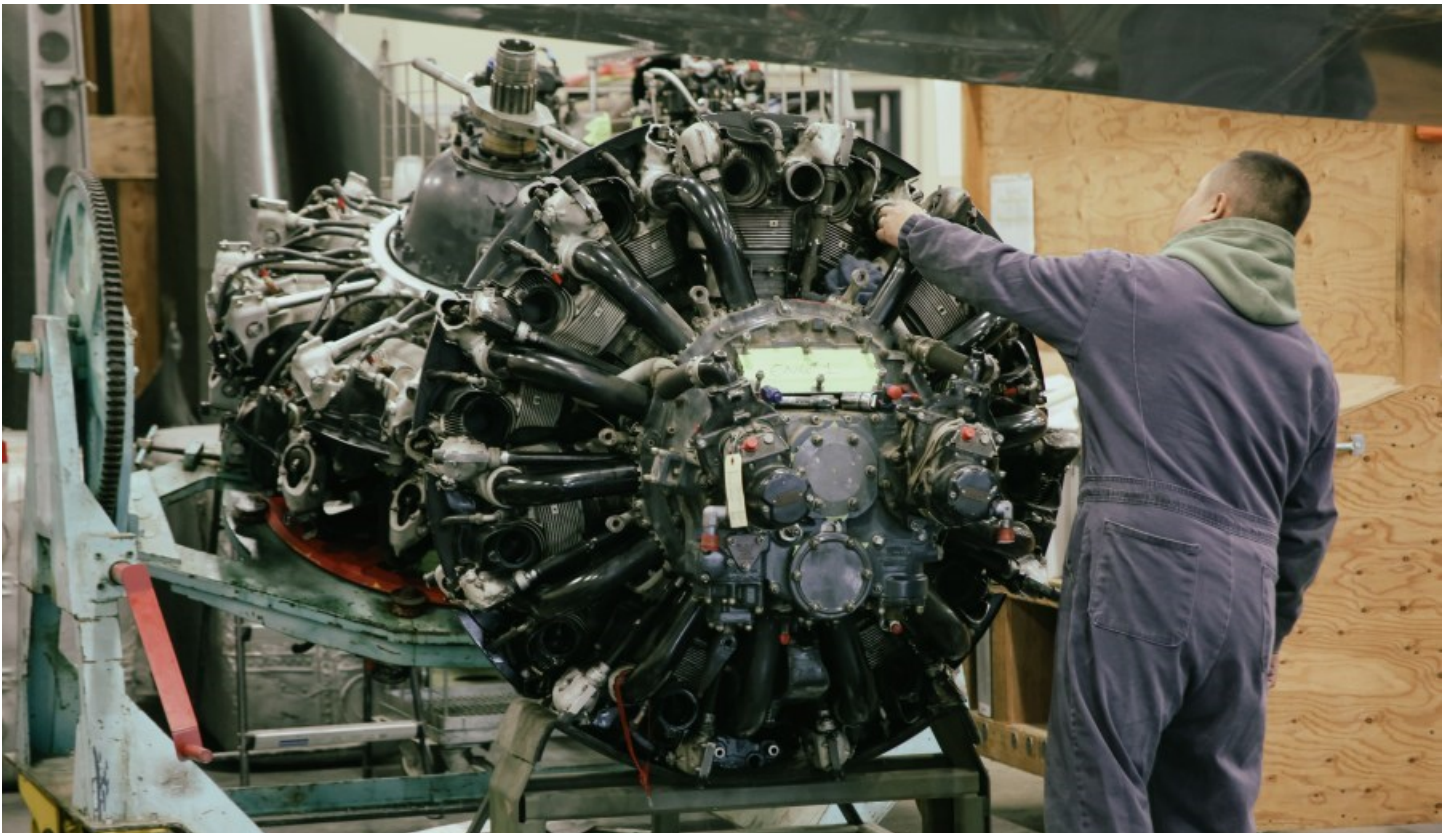












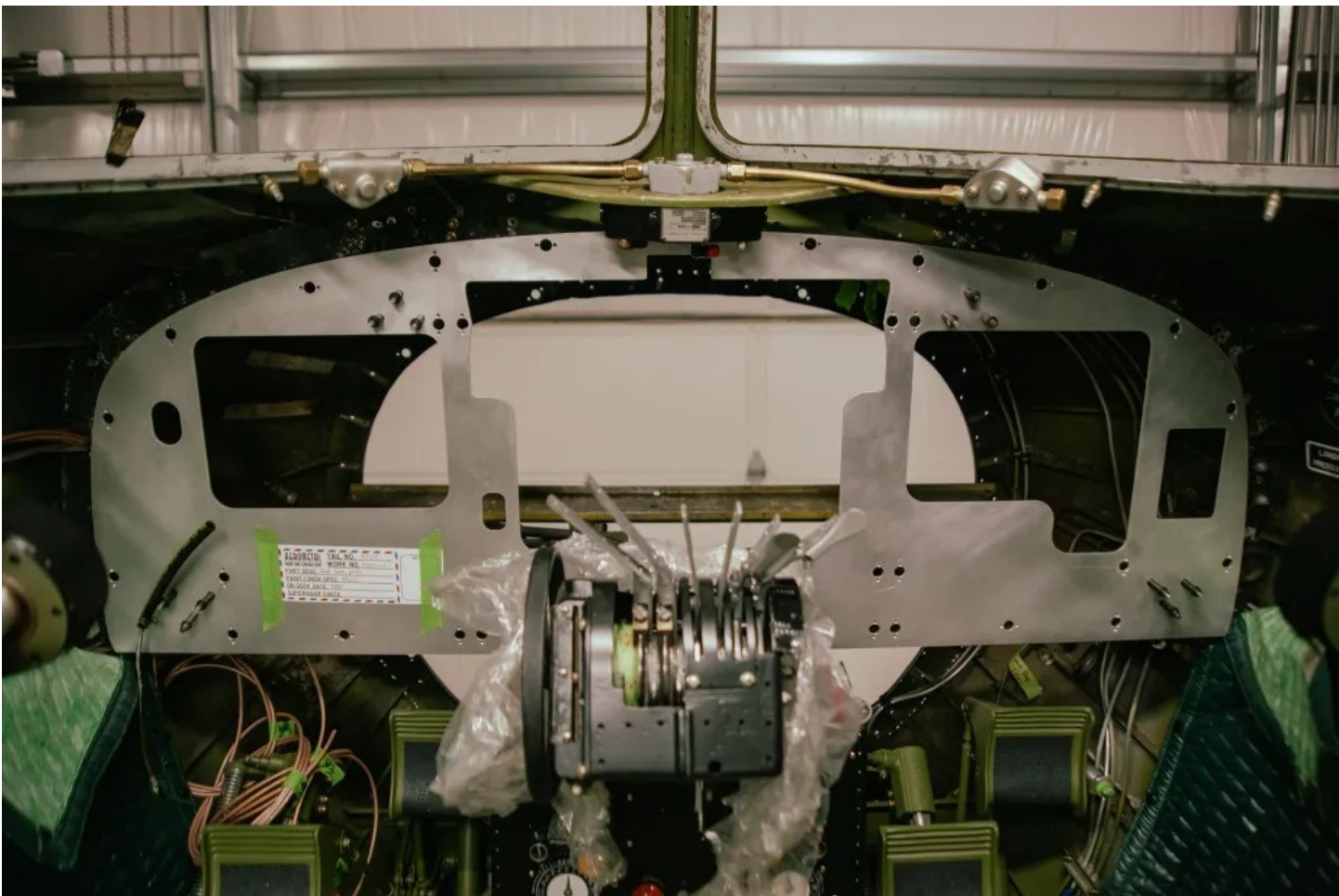
Engines and Propellers

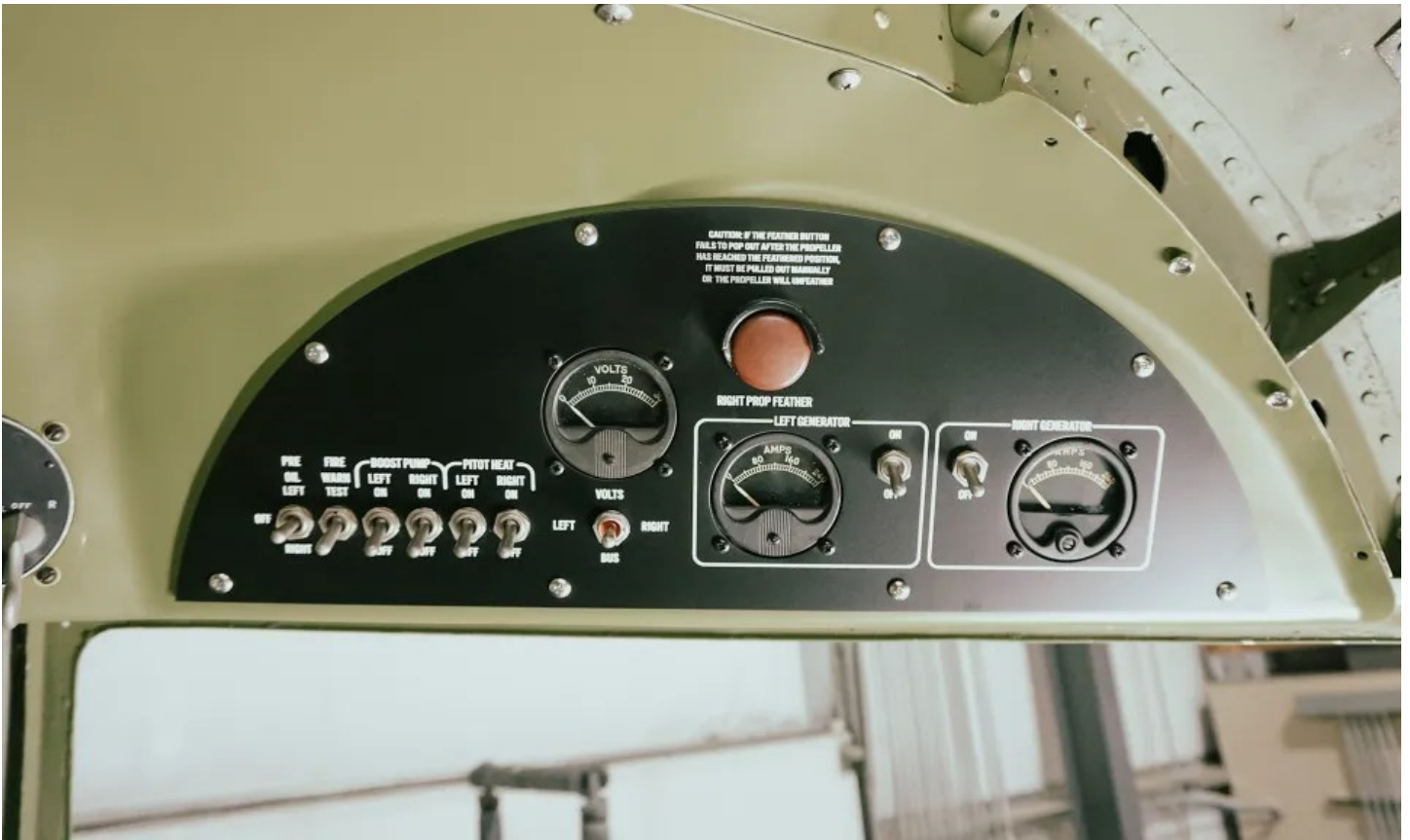
Critical to the restoration project was the meticulous attention given to the engines and propellers. Engines were carefully removed from the airframe to facilitate necessary firewall repairs and underwent thorough inspections. Hoses and lines were replaced as needed. Propellers were sent out for comprehensive overhaul and compliance with AD requirements, meticulously stenciled according to original specifications. Engine and propeller control cables were remade as necessary.









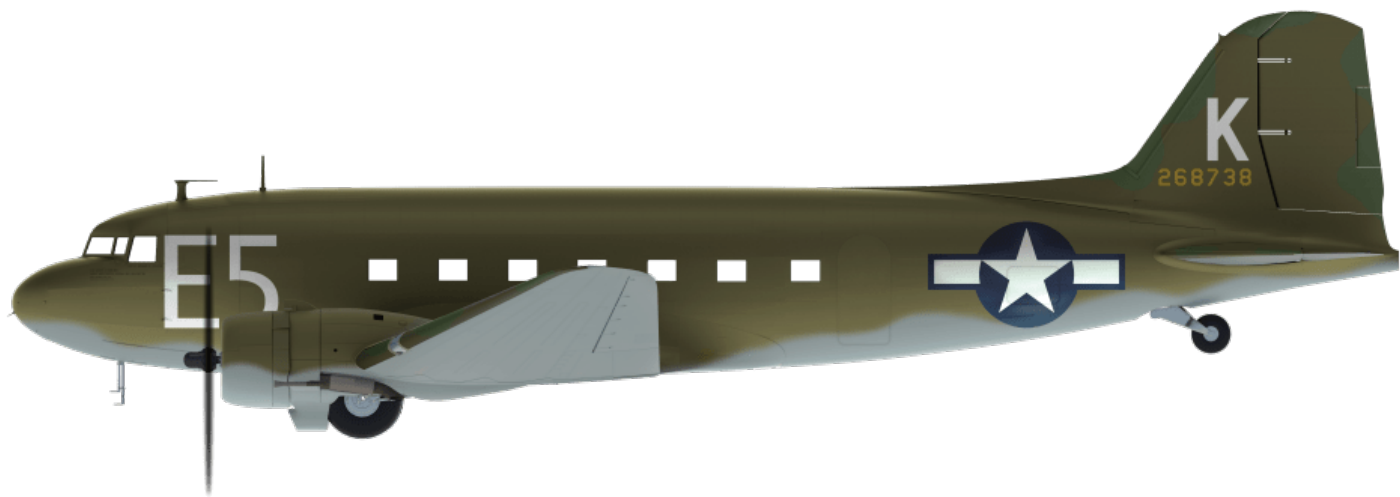


Flight Deck and Avionics

Modern avionics were integrated into the aircraft, maintaining its historical authenticity while enhancing operational capabilities. Upgrades included GI 275s and GTN650Xis, ensuring the aircraft's readiness for Instrument Flight Rules (IFR) operations. Attention to detail extended to features like cowl flap selectors, painted to original Douglas finish specifications, and preserving original paint on components such as firewall shutoff valves, flap, and gear handles, maintaining the aircraft's historical accuracy.







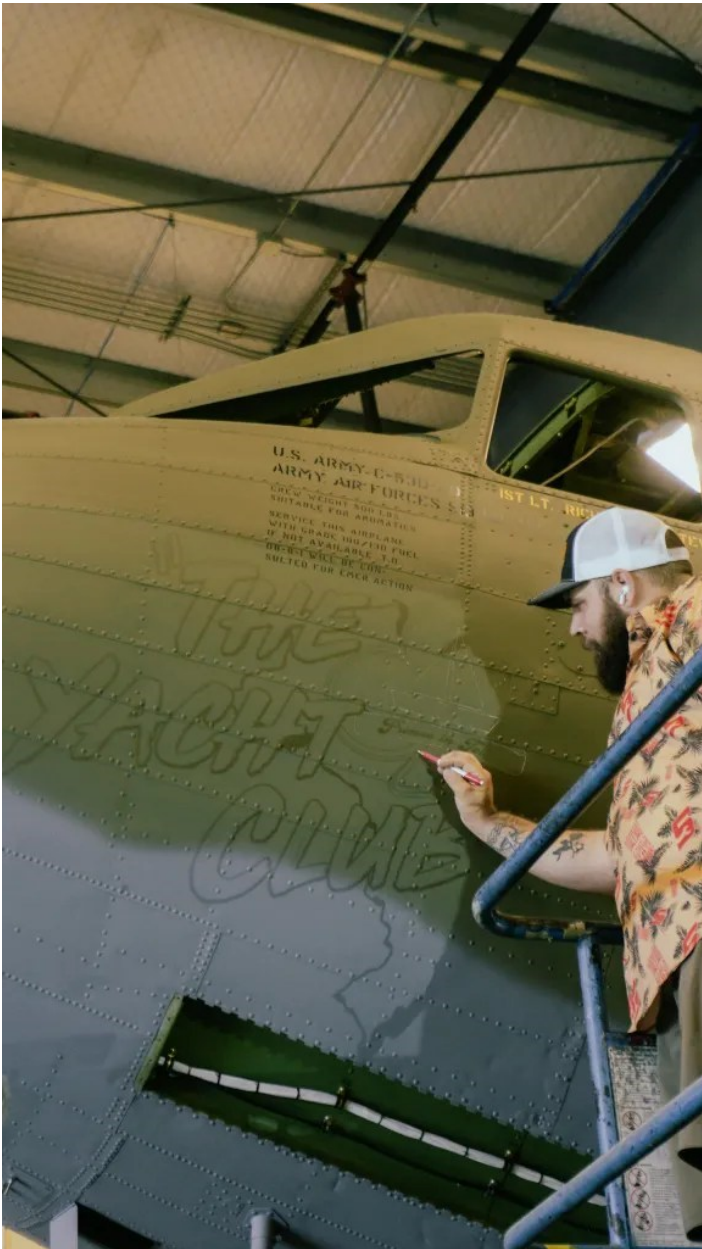




Livery and Exterior Details

The exterior restoration was carried out with utmost precision to reflect the aircraft's historical context and design. Painted in a proposed late-war livery, every detail was meticulously applied to original Douglas specifications. All exterior stencils were hand-applied using ink ordered to military specifications, ensuring accuracy and historical integrity. Notably, the aircraft proudly displays the Yacht Club nose-art, symbolizing continuity as the Yacht Club still exists today, using the same motto and expressing eagerness to host the airplane.



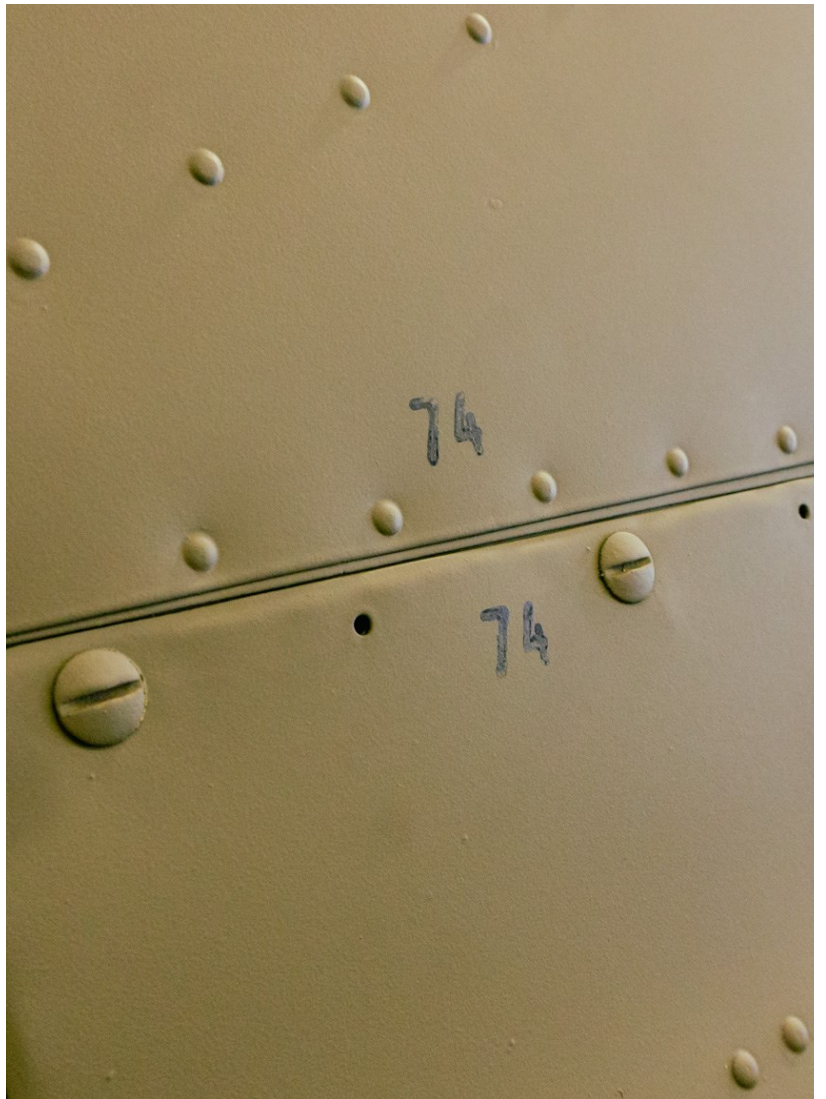
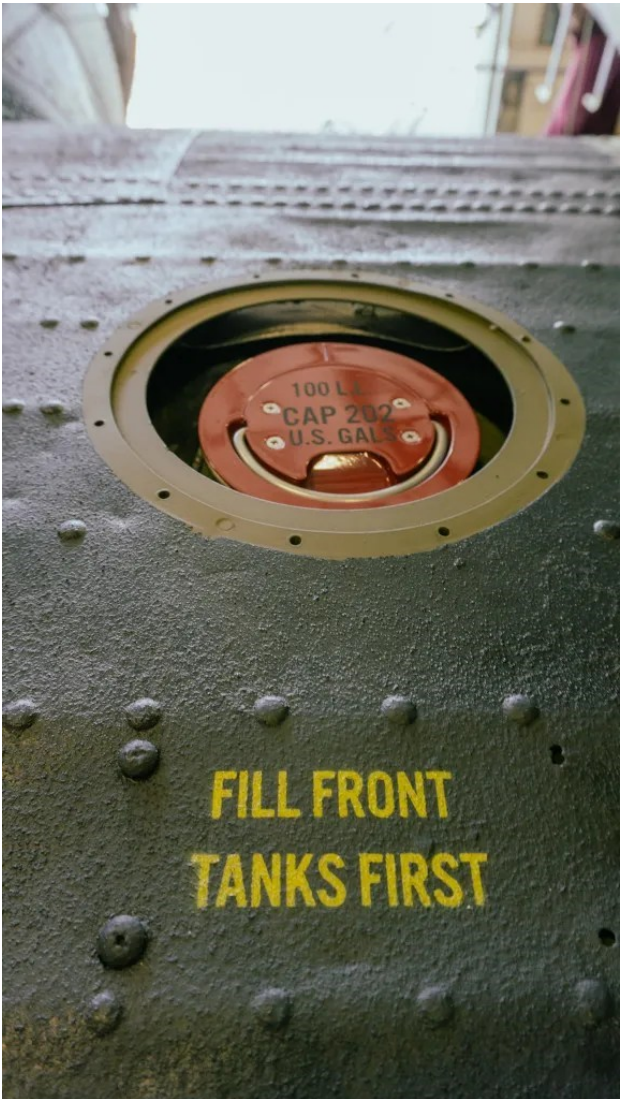
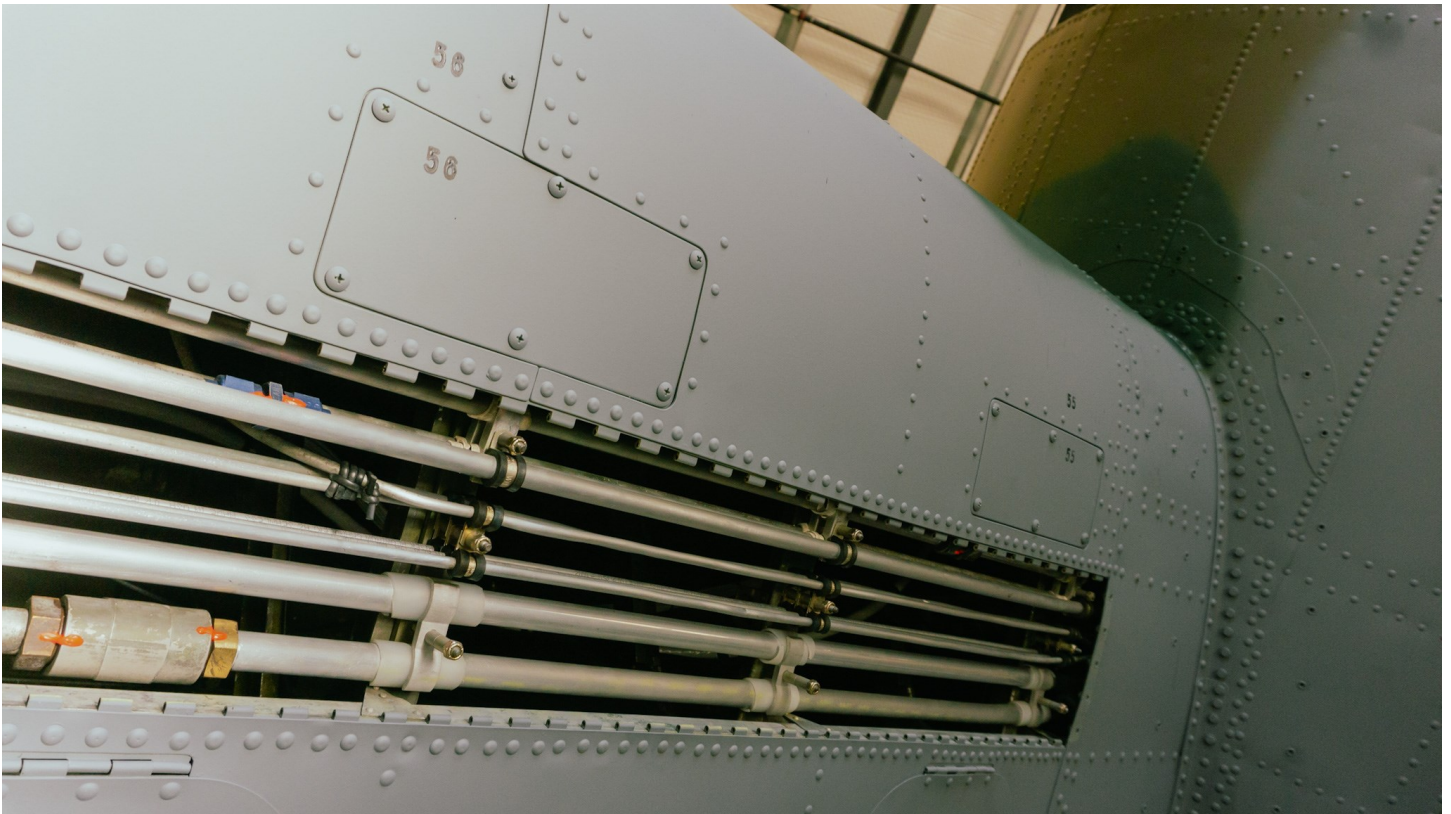




...WEIGHT 400 LBS
...FOR AIRPLANE
...130 GALLONS FUEL
...T.O.
...ON
SERVING...
WITH GRAD...
IF NOT AVAI...
...WILL...
...FOR...

Primus in Toto

...B...











Reassembly and Final Checks

The final stages of reassembly were conducted with meticulous attention to detail and adherence to safety protocols. Engine runs were performed prior to wing installation to ensure optimal performance. Wings were installed and flight controls meticulously rigged to precision specifications. Interior installation included the placement of refurbished components and final adjustments. Rigorous final pre-flight checks were conducted to verify that every aspect of the restoration met exacting standards, ensuring both historical authenticity and operational safety.

